



HEATING & AIR CONDITIONING EQUIPMENT

**R410A**

**An Ideal Degree of Comfort for All Types of Multi-Family Construction**

# CONDENSING UNITS **D/E** series

## NCPE1000, NCPE3000 and NCPD/E4000

### FEATURES

- Three Capacity Sizes in Each of the Condensing Unit Models
- Compatible with Most Brands of "Indoor" Units
- Available in 1.5 to 2.5 Ton Sizes
- Heavy-Duty, Water Resistant Cabinet
- R-410A High Efficiency Compressor
- Easy Access Control Box
- Easy Access to Blower
- Long-Life Blower Motor
- High Efficiency Condenser Coil
- Brass Service Valves
- DC Motor (418-4000 Series only)

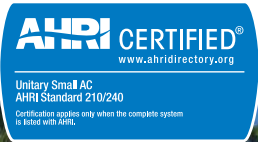
### WHY THRU-THE-WALL?

- Easily Serviced in Any Weather
- Less Expensive Installations
- Ground Clutter Eliminated
- No Theft or Vandalism
- Less Refrigerant Charge
- No Roof Penetration
- Short Copper Tube Runs
- Separate Meter Savings
- Better Appearance

### MEETS 2010 DOE REQUIREMENTS FOR ALL UNITS.

Thru-the-Wall high efficiency condensing units from 1.5 to 2.5 tons.

**Applications include:** high-rise condominiums, garden apartments, retirement villages, luxury town homes, hotels and motel suites, and student housing.



**WE GO THRU-THE-WALL™**

# CONDENSING UNITS NCPE1000, NCPE3000 and NCPD/E4000

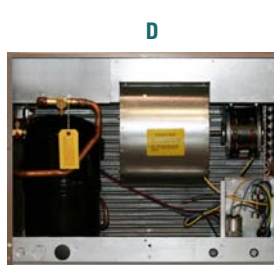
## NCPE1000



## NCPE 3000



## NCPD/E4000



SERIES 1000 NCPD-418-1010	SERIES 1000 NCPD-424-1010	SERIES 1000 NCPD-430-1010	SERIES 3000 NCPD-418-3010	SERIES 3000 NCPD-424-3010	SERIES 3000 NCPD-430-3010	SERIES 4000 NCPD-418-4010	SERIES 4000 NCPD-424-4010	SERIES 4000 NCPD-430-4010
<b>DIMENSIONS</b>								
26 1/4" wide**	26 1/4" wide**	26 1/4" wide**	24 1/8" wide**	24 1/8" wide**	24 1/8" wide**	30" wide**	30" wide**	30" wide**
28 5/8" high	28 5/8" high	28 5/8" high	32" high	32" high	32" high	23" high	23" high	23" high
18 1/2" deep	18 1/2" deep	18 1/2" deep	18 1/2" deep	18 1/2" deep	18 1/2" deep	18 1/2" deep	22 1/2" deep	22 1/2" deep
180 lbs.	180 lbs.	180 lbs.	180 lbs.	180 lbs.	180 lbs.	180 lbs.	180 lbs.	180 lbs.
3/8" liquid valve	3/8" liquid valve	3/8" liquid valve	3/8" liquid valve	3/8" liquid valve	3/8" liquid valve	3/8" liquid valve	3/8" liquid valve	3/8" liquid valve
3/4" vapor valve	3/4" vapor valve	3/4" vapor valve	3/4" vapor valve	3/4" vapor valve	3/4" vapor valve	3/4" vapor valve	3/4" vapor valve	3/4" vapor valve
<b>ARI RATING</b>								
18,000 BTU	23,800 BTU	27,200 BTU	18,000 BTU	23,800 BTU	27,200 BTU	18,000 BTU	23,600 BTU	27,200 BTU
12.0 SEER	12.0 SEER	12.0 SEER	12.0 SEER	12.0 SEER	12.0 SEER	12.0 SEER	12.0 SEER	12.0 SEER
<b>ELECTRICAL</b>								
208/230 volts	208/230 volts	208/230 volts	208/230 volts	208/230 volts	208/230 volts	208/230 volts	208/230 volts	208/230 volts
60 hertz	60 hertz	60 hertz	60 hertz	60 hertz	60 hertz	60 hertz	60 hertz	60 hertz
1 phase	1 phase	1 phase	1 phase	1 phase	1 phase	1 phase	1 phase	1 phase
14 min. AWG wire	12 min. AWG wire	12 min. AWG wire	14 min. AWG wire	12 min. AWG wire	12 min. AWG wire	14 min. AWG wire	12 min. AWG wire	12 min. AWG wire
15 max. fuse	20 max. fuse	25 max. fuse	15 max. fuse	20 max. fuse	25 max. fuse	15 max. fuse	20 max. fuse	25 max. fuse
<b>COMPRESSOR</b>								
7.3 RLA (amps)	9.10 RLA (amps)	9.9 RLA (amps)	7.3 RLA (amps)	9.10 RLA (amps)	11.1 RLA (amps)	6.5 RLA (amps)	8.0 RLA (amps)	9.9 RLA (amps)
48.0 LRA	58.3 LRA	54.0 LRA	48.0 LRA	58.3 LRA	73.0 LRA	43.0 LRA	43.0 LRA	54.0 LRA
<b>FAN MOTOR</b>								
.25 HP	.25 HP	.25 HP	.25 HP	.25 HP	.25 HP	.25 HP	.25 HP	.25 HP
1.4 amps	1.4amps	1.4 amps	1.4 amps	1.4 amps	1.4amps	2.4 amps	1.4 amps	1.4 amps
<b>COIL</b>								
3 rows	4 rows	4 rows	3 rows	4 rows	4 rows	3 rows	4 rows	4 rows
3.61 face area	3.61 face area	3.61 face area	3.77 face area	3.77 face area	3.77 face area	3.14 face area	3.14 face area	3.14 face area
16 FPI	16 FPI	16 FPI	16 FPI	16 FPI	16 FPI	16 FPI	16 FPI	16 FPI
<b>INDOOR UNIT</b>								
Carrier*	Carrier*	Carrier*	Carrier*	Carrier*	Carrier*	Carrier*	Carrier*	Carrier*
FV4CNF003	FV4CNF005	FV4CNF005	FV4CNF003	FV4CNF005	FV4CNF005	FV4CNF003	FV4CNF005	FV4CNF005
650 CFM	870 CFM	950CFM	650 CFM	870 CFM	950 CFM	650 CFM	870 CFM	950 CFM
<b>REPLACES</b>								
Bryant	Bryant	Bryant	Carrier	Carrier	Carrier	Dunham-Bush	Dunham-Bush	Dunham-Bush
Carrier	Carrier	Carrier	Fedders	Fedders	Fedders	Hydro-Therm Space Pack	Hydro-Therm Space Pack	Hydro-Therm Space Pack
Day & Night	Day & Night	Day & Night	Lennox	Lennox	Lennox			
Dunham-Bush	Dunham-Bush	Dunham-Bush	Magic Chef	Magic Chef	Magic Chef	Lennox	Lennox	Lennox
Lennox	Lennox	Lennox	Meyer	Meyer	Meyer	Luxaire York	Luxaire York	Luxaire York
Magic Chef	Magic Chef	Magic Chef	Rheem	Rheem	Rheem	U.S. A/C (CB)	U.S. A/C (CB)	U.S. A/C (CB)
Meyer	Meyer	Meyer	U.S. A/C (AB)	U.S. A/C (AB)	U.S. A/C (AB)	Westinghouse	Westinghouse	Westinghouse
Payne	Payne	Payne	<b>Note:</b> All specifications are subject to change without notice. * Condensing units are compatible with most manufacturers of indoor air handlers and coils. ** Dimensions including screw heads on both sides of the cabinet.					
U.S. A/C (BB)	U.S. A/C (BB)	U.S. A/C (BB)						



National Comfort Products offers Architectural Louver Grilles for all models. Outdoor grilles provided by others must be approved by National Comfort Products to maintain unit performance and warranty coverage. See Architectural Louver Grilles Specification Sheet for more details.



A Division of National Refrigeration and Air Conditioning Products, Inc.  
 539 Dunksferry Road • Bensalem, PA 19020  
**(800) 523-7138** • Phone (215) 244-1400  
 Fax (215) 639-1674  
[www.nationalcomfortproducts.com](http://www.nationalcomfortproducts.com)